



Palermo Road NW10

Parkheath  
*Sold on Service*





## Palermo Road, NW10, £575,000, Leasehold

### Brent Band C

- Private south facing garden
- Garden studio
- 2 large double bedrooms
- Ground floor
- Victorian property
- Open plan living space
- Opportunity to extend (STPP)
- Attractive tree lined road
- Leasehold
- EPC: Rating C, Council Tax: Brent band C



**Parkheath**  
*Sold on Service*

Belsize Park/Hampstead  
208 Haverstock Hill  
NW3 2AG  
Sales 020 7431 1234  
Lettings 020 7431 3104  
[nw3@parkheath.com](mailto:nw3@parkheath.com)

Kensal Rise  
54-56 Chamberlayne Rd  
NW10 3JH  
Tel 020 8960 4845  
[kensal@parkheath.com](mailto:kensal@parkheath.com)

South/West Hampstead  
192 West End Lane  
NW6 1SG  
Sales & Lettings  
Tel 020 7794 7111  
[192@parkheath.com](mailto:192@parkheath.com)

Property Management  
192 West End Lane  
NW6 1SG  
020 7433 6174  
[pm@parkheath.com](mailto:pm@parkheath.com)

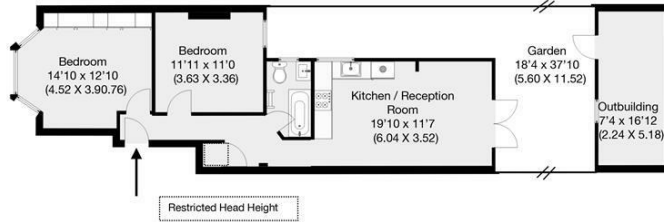
[www.parkheath.com](http://www.parkheath.com)



Palermo Road, London, W10

Approximate Gross Internal Area Without Outbuilding 65 sqm / 699.6 sqft

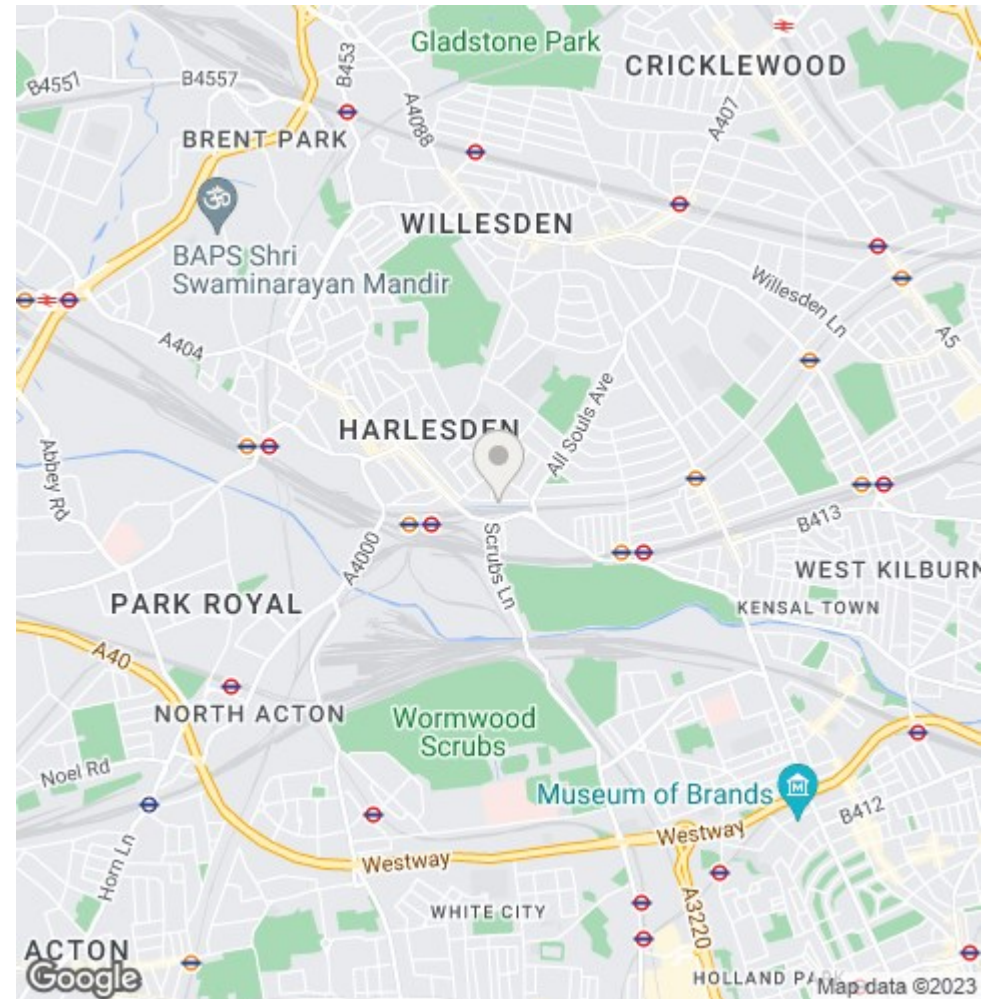
Approximate Gross Internal Area With Outbuilding 76.6 sqm / 825 sqft



Ground Floor

THIS FLOOR PLAN IS PRODUCED FOR PARKHEATH SUBMITTED BY ARCHIMEDIA web: www.archi-media.co.uk

Whilst every attempt has been made to ensure the accuracy of the floor plan contained here, measurements of floors, windows and rooms are approximate and no responsibility is taken for any errors, omissions or misstatements. These plans are for representation purposes only and should be used as such by any prospective buyer or tenant. Specifically no guarantee is given on the gross internal floor area of the property if quoted on this plan and any figures given is initial guidance only and should be treated as such.



The particulars do not constitute part of an offer or contract. The particulars, including text, photographs and plans, are for the guidance only of prospective purchasers/tenants and must not be relied upon as statements of fact. The descriptions provided therein represent the opinion of the author and whilst given in good faith should not be construed as statements of fact. Nothing in these particulars shall be deemed a statement that the property is in good condition or otherwise or that any services or facilities are in good working order. All measurements are approximate